



Connections

The Newsletter of Marlborough Lines Limited **SPRING 2007**

Current & Recently Completed Projects

Keeping ahead of consumer demand for electricity means Marlborough Lines has a continual programme of implementing planned upgrades to our network.

Projects recently completed to provide increased capacity for the present customer base and allow for ongoing load growth include:

- Increasing transformer capacity from 10MVA to 39MVA at the Springlands substation.
- Installing new high voltage switchgear at the Nelson Street substation.
- Increasing transformer capacity from 10MVA to 30MVA at the Picton substation.
- Increasing transformer capacity and installing new switchgear at the Redwoodtown substation.

New equipment, lines or upgrades to older lines have been completed in: Wratts Road, Cravens Road, a further two stages in Rapaura Road, Tyntesfield Road, State Highway 63 West of Renwick, Waterfalls Road, Taylor Pass Road, and the start of the line into the Marlborough Sounds at Mahau.

Additionally we have recently installed new underground feeder cables from our Spring Creek substation, a new voltage booster site at Elaine Bay, and a new transformer in the Picton CBD to increase capacity in that area.

Looking ahead, new upgrades are shortly to be undertaken in:

- | | | |
|---------------------|-----------------|------------------|
| • Ben Morven Road | • Seaview Road | • Jeffries Road |
| • Murrays Road | • Hardings Road | • Pac Lims Road |
| • Redwood Pass Road | • Boyces Road | • Linkwater Road |

We're also upgrading our substation at Ward and increasing transformer capacity at our substations at Woodbourne, Seddon and in Nelson Street.

Sponsorship

The 2007 Science and Technology Fair, sponsored by Marlborough Lines, runs from 18 –19th September. The entries prepared by primary, intermediate and secondary students from throughout the region are exhibited for public viewing at the Marlborough Lines Stadium 2000 on Tuesday 18th from 4pm – 7pm and on Wednesday 19th from 9am – 7pm. We hope you will take the opportunity to come and view this showcase of scientific exploration and application and we congratulate all the participants on their endeavours.

The Science and Technology fair has been sponsored by Marlborough Lines for the past 17 years in partnership with Blenheim Lions and a large number of community organisations.

Marlborough Lines is also pleased to be associated with the Stadium now known as Marlborough Lines Stadium 2000, a facility used daily by a wide cross-section of the community.

Rise In Peak Demand Reflects Winter Weather



The July cold spell increased the instantaneous peak demand draw off for our Network by 11.8% compared to the highest demand during winter 2006.

All 12 peak demand levels used for charging by Transpower that were created last year were superseded by higher demands in late June/early July this year.

The highest 2007 peak, averaged over a half hour time period, increased by 11.0% over the highest period in 2006 and illustrates why the company has had to invest to provide for increased capacity within the network.

Look Up and Live - An Important Safety Message



We should all be vigilant when working near overhead power lines and buried cables. If you're using a digger or a truck with a raised deck you need to be especially careful about the potential to inadvertently make contact with conductors and cables.

Launching yachts at launching ramps where there may be overhead power lines is another area that poses risk and particular care should be taken.

www.marlboroughlines.co.nz

Confused About the Difference Between Marlborough Lines and Your Electricity Supplier?

Because there are many different organisations involved in the process of getting electricity to you, and there has been significant change in the role of Marlborough Lines' within the past decade, it is easy to get confused about 'who does what' in the provision of your electricity. In particular, Marlborough electricity consumers sometimes confuse Marlborough Lines with the retailers who supply electricity in the region. This confusion leads to some consumers coming in to Marlborough Lines' offices to pay their electricity account, when it should be paid to their electricity supplier. It also means we get queries about the proposed Wairau River hydro scheme, which is an electricity supplier (TrustPower) project and unrelated to Marlborough Lines.

The following is intended as a guide to clarify the role of Marlborough Lines and differentiate our business from that of other organisations in the electricity chain.

Marlborough Lines is responsible for constructing, operating and maintaining the electricity network in Marlborough. Our network encompasses the substations, overhead lines, underground cables, transformers and power poles that transport electricity throughout the region.

Electricity is transported to the region by national grid operator Transpower, and Marlborough Lines then transports this electricity, at varying voltages, from the supply substations around the region through our network to your installation/s.

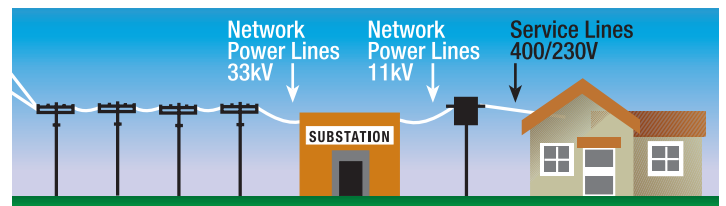
In Marlborough you have a choice of five electricity retailers (or suppliers) - Contact Energy, Genesis Power, Meridian Energy, Mighty River Power and TrustPower. All of these companies have arrangements in place with Marlborough Lines to deliver the electricity to their customers in Marlborough.

We charge the various electricity retailers in Marlborough for delivering that electricity. The electricity retailers then bundle up the charges for electricity generation, transmission, distribution and retailing, and invoice the end users. So our line charges for keeping electricity flowing to your home or business are included in your monthly bill from your energy retailer.

As well as operating Marlborough's electricity network, Marlborough Lines also provides a full electrical contracting service, Marlborough Lines Contracting.

We are a locally owned and operated business. All shares in the company are owned by the Marlborough Electric Power Trust, which holds the shares in the company on behalf of its beneficiaries - who are the current and future electricity users in the Marlborough region. The annual electricity discount that you receive from Marlborough Lines, which is paid as a credit on your electricity bill from your retailer, is one of the ways in which our ownership structure benefits local consumers.

You can find more information about Marlborough Lines and Marlborough Lines Contracting on our website: www.marblboroughlines.co.nz



Impact of Tree Regulations Now Apparent



It is pleasing to see that many areas around the region are now starting to reflect the impact of the Electricity (Hazards from Trees) Regulations legislation that took effect from July 2005, which requires a wider safety gap between overhead lines and vegetation.

Marlborough Lines continues to publicise the requirements of this legislation because it is important that all property owners are familiar with their responsibilities in respect of trees near both network power lines and service lines. Even if you don't have trees on your property we appreciate your assistance by letting us know if there are any trees in close proximity to lines that may pose a risk to supply in the event of high winds.

For public safety and to protect your power supply, trees need to be kept at a safe distance from power lines. Trees can become a dangerous hazard and can interrupt your power supply when they grow too close to power lines. They have the potential to cause power surges and appliance damage, power failure, fire, electric shock or electrocution.

The new regulations about the safety of trees relative to power lines require minimum clearances of 3.5 metres for 33kV lines, 2.6 metres for 11kV lines and 1.5 metres for those of lower voltage. This is called the "notice" zone. Once vegetation encroaches within these distances a "cut and trim" notice will be

served on the tree owner. For this reason, greater cut distances than the "notice zone" are required to achieve a reasonable return time.

For detailed information about the Hazards from Trees Regulations, including penalties for non-compliance and dispensation / dispute procedures, please refer to our website: www.marblboroughlines.co.nz

Do not trim trees near network lines yourself as this is very dangerous. The regulations require that the work be undertaken only by professional arborists approved by the electricity network company. In Marlborough tree trimming can be undertaken by Marlborough Lines Contracting or other approved arborists.

Marlborough Lines Contracting can also trim trees around your service lines. For a quote and to book a crew to trim trees near your service line call 577 7007. Unless you are using someone qualified to work around live lines, always have your power supply temporarily disconnected before working near service lines. To arrange a temporary disconnection phone us on 577 7007.

Marlborough Lines has an on-going tree inspection programme on our network lines however if you are aware of a tree or branches in close proximity to a line please call us. Through acting together we can eliminate danger and maximize the security of your power supply.

Temporary Relocation of Premises

Marlborough Lines' offices in Alfred Street are undergoing renovation and we have temporarily relocated to the company's Taylor's Pass facilities (adjacent to the west entrance of Wairau Hospital) until mid December. Our contact telephone numbers will remain unchanged during the relocation.



**Feedback,
Comments
& Queries**

If you have any queries or concerns regarding the reliability of your electricity supply we encourage you to contact us directly : **Telephone (03) 577 7007.**

Our consumer services personnel also welcome your feedback and general enquiries. If you wish to send us an email you can use the Contact Us form on our website www.marblboroughlines.co.nz or send us a letter to the postal address provided below.